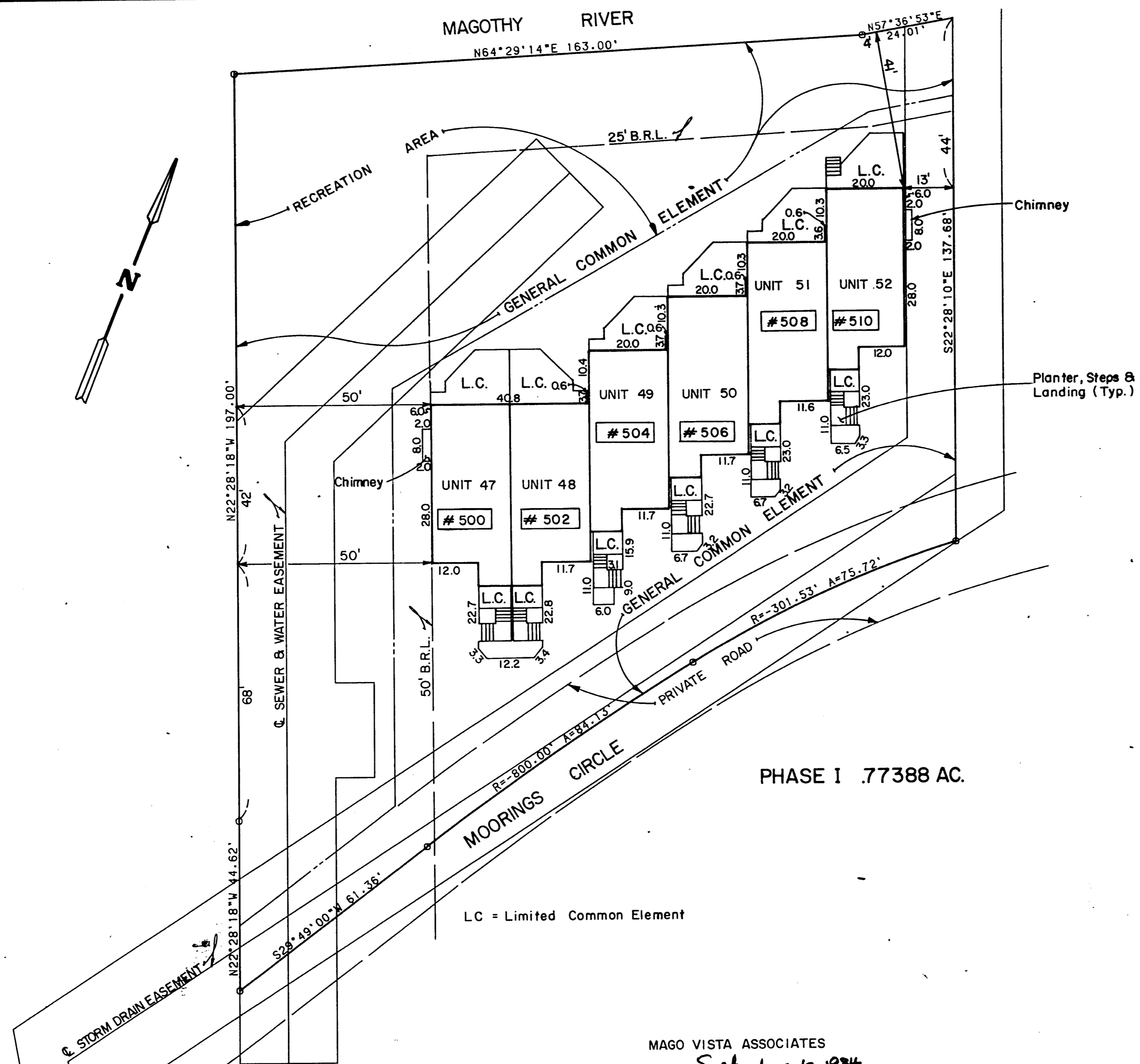


E-1257

MAGOTHY RIVER



PHASE I .77388 AC.

LC = Limited Common Element

SURVEYOR'S CERTIFICATE
 I hereby certify that the position of all existing improvements on the above described property have been carefully established by a transit-tape survey and that unless otherwise shown, there are no encroachments.

Charles A. Shreeve III 3/13/84
 Charles A. Shreeve III, R.L.S. No. 9422 Date



BUILDING NO. ONE

**PHASE I
 CONDOMINIUM PLAT
 THE MOORINGS
 ON THE MAGOTHY**

THIRD DISTRICT ANNE ARUNDEL CO., MD.
 SCALE 1" = 20' NOVEMBER 1983

GREENHORNE & O'MARA, INC.
 ENGINEERS, ARCHITECTS PLANNERS SURVEYORS
 2099 GENERALS' HIGHWAY
 ANNAPOLIS, MARYLAND 21401 PHONE 266-0066

SHT. 2 OF 7
FILE NO. A-165-P

MAGO VISTA ASSOCIATES

DATE: September 10, 1984

James L. Potter Jr.
 James L. Potter Jr., Secretary
 CPM Development Corporation, Partner

Anthony H. DeVeau
 Anthony H. DeVeau, Vice President
 Maryland Service Development Corporation, Partner

Robert E. Furney
 Robert E. Furney, President
 Acorn Developments, Inc., Partner

ANNE ARUNDEL COUNTY
 OFFICE OF PLANNING AND ZONING

Dorance Beck Kurler 9/11/84
 Planning & Zoning Officer Date

A. A. COUNTY HEALTH DEPARTMENT

Almond Beck 9/11/84
 Health Officer Public System Date

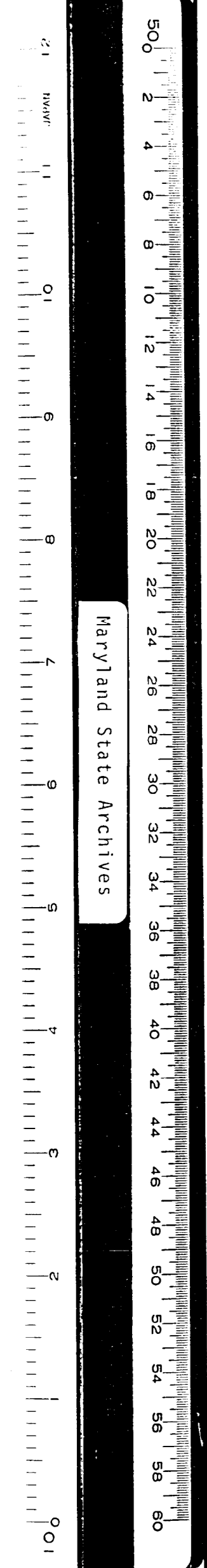
CONSTRUCTION WALL CHECK
 BUILDING COMPLETE TO ROOF 3-12-84

1984 SEP 18 AM 10:26

COLLISON

BOOKE-26 FOLIO 7

msa 35u 1489-688-2



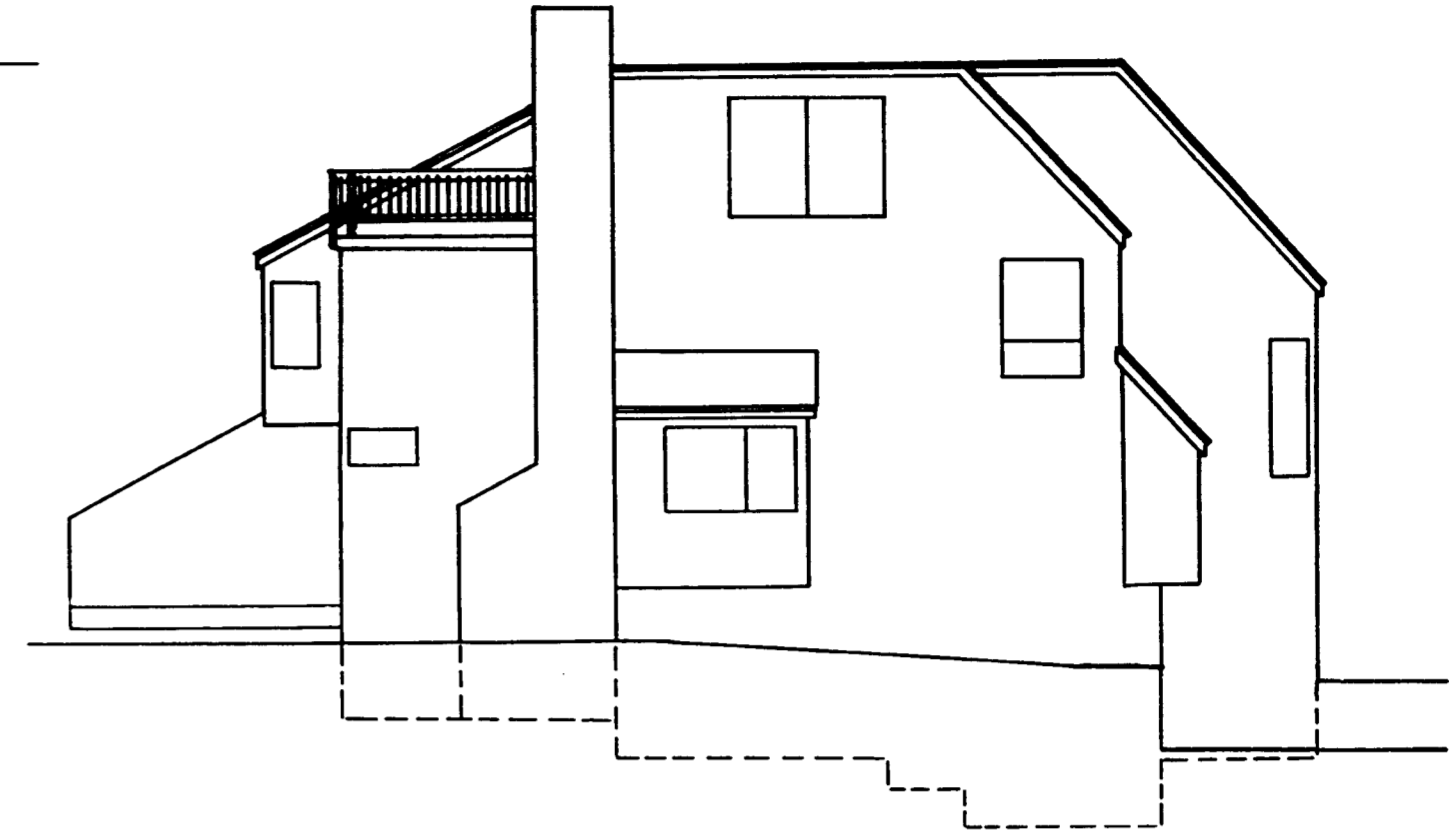
Harj and State Archives

ANNE ARUNDEL COUNTY CIRCUIT COURT (Condominium Plats, AA) Plats E1256-E1262; Plat Book E26, pp. 6-12, MSA, S1489, 688. Date available 1984/09/18. Printed 11/01/2018.

E-1258 I



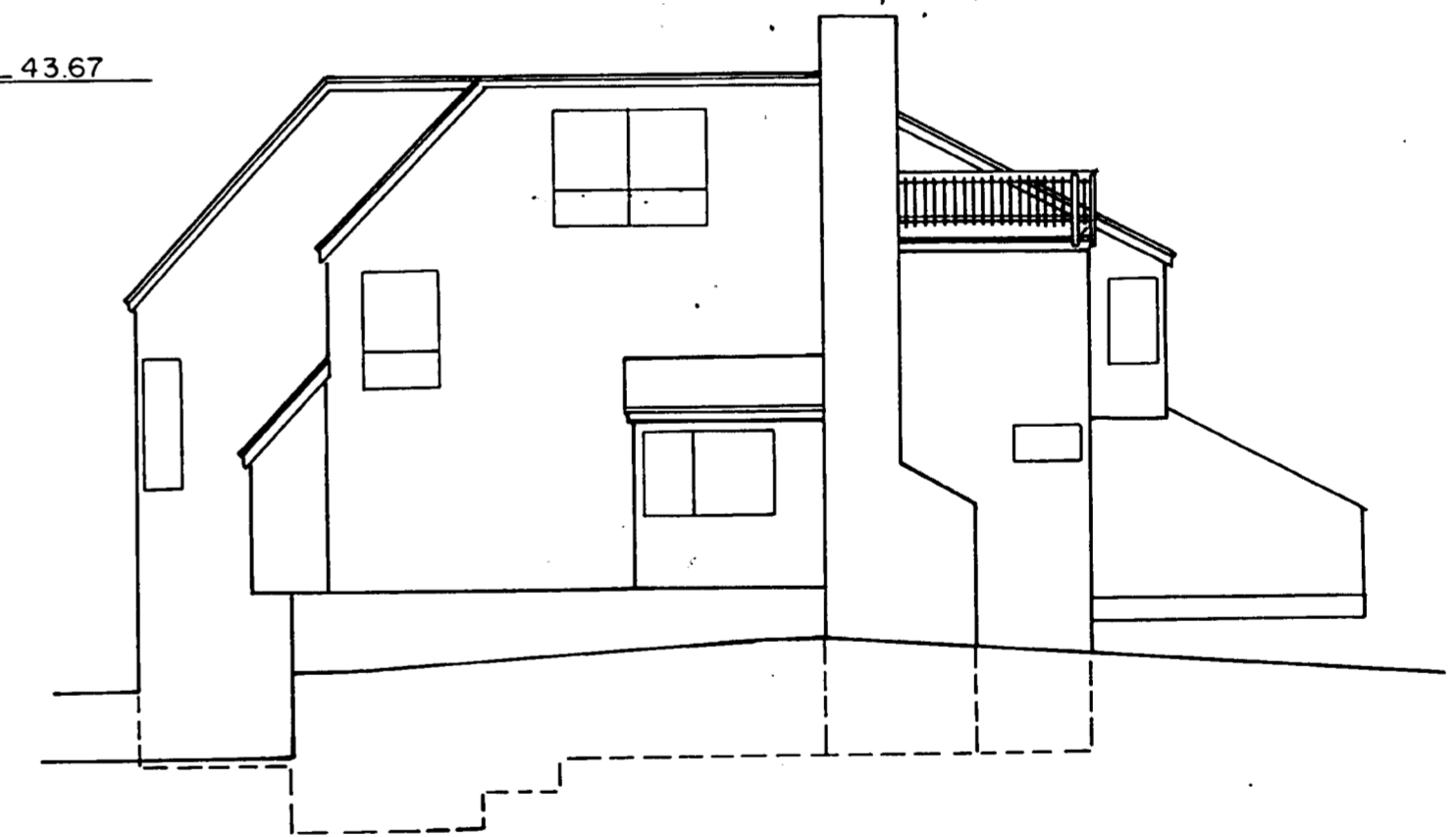
FRONT ELEVATION



LEFT SIDE



REAR ELEVATION



**PHASE ONE
THE MOORINGS
ON THE MAGOTHY**

3RD. DISTRICT
ANNE ARUNDEL COUNTY, MARYLAND
SCALE: 1"=10' NOV, 1983

GREENHORNE & O'MARA, INC.

ENGINEERS ARCHITECTS PLANNERS SURVEYORS
2098 Generals Highway
Annapolis, Maryland 21401

SHT. 3 OF 7
FILE NO. A-165-P

MAGO VISTA ASSOCIATES
DATE: September 19, 1984

James L. Potter Jr., Secretary
CPM Development Corporation, Partner

Anthony H. Deveau, Vice President
Maryland Service Development Corporation, Partner

Robert E. Furtney, President
Acorn Developments, Inc., Partner 1984 SEP 18 AM 10:26

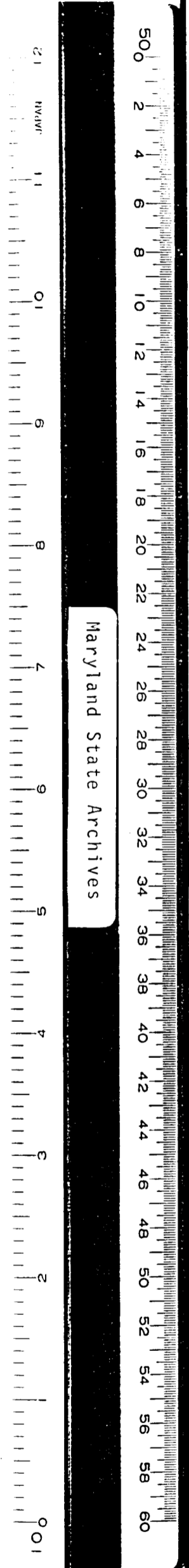
ANNE ARUNDEL COUNTY
OFFICE OF PLANNING AND ZONING

Florence Beck Kurdle, 9/11/84
Planning & Zoning Officer Date

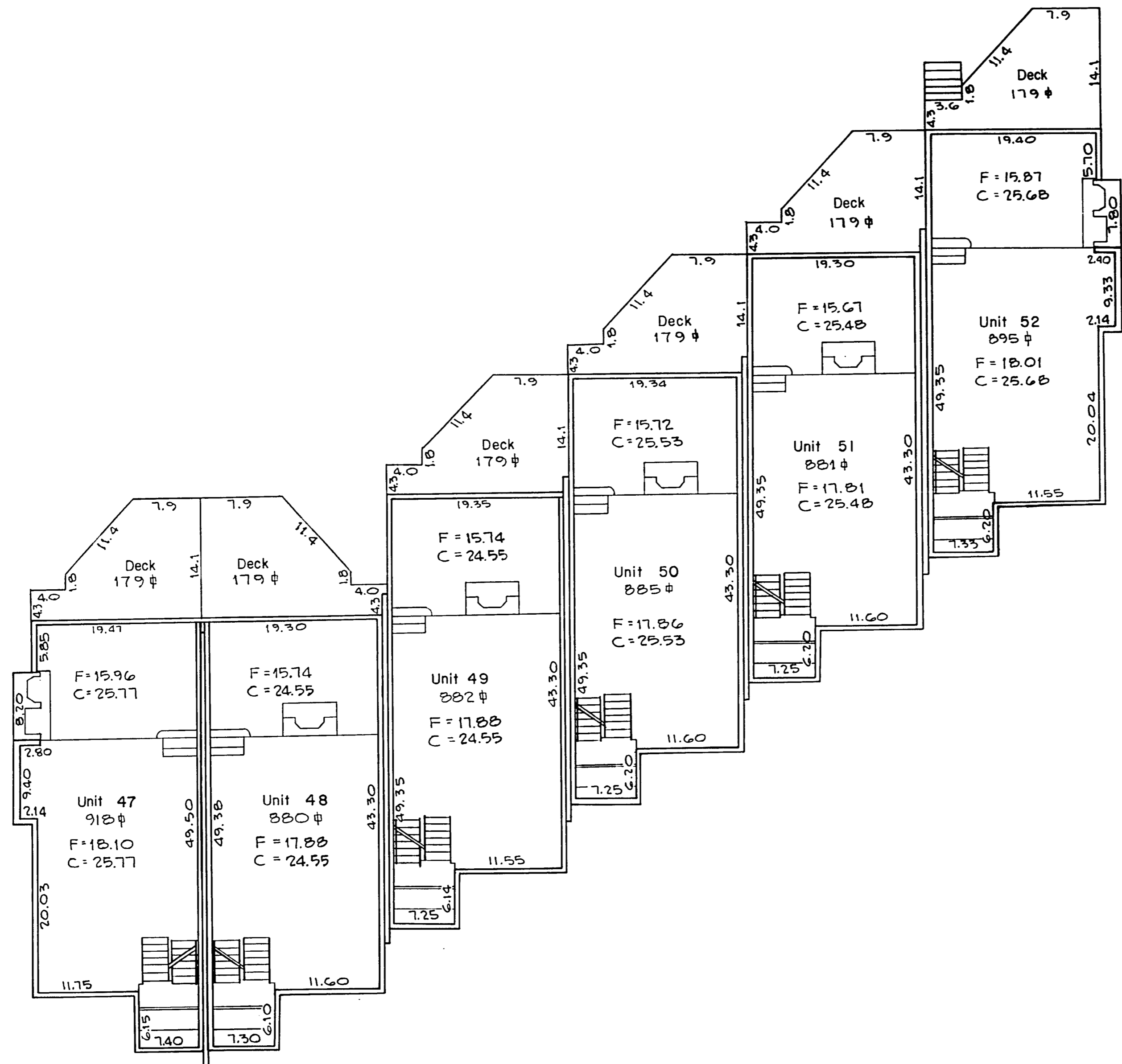
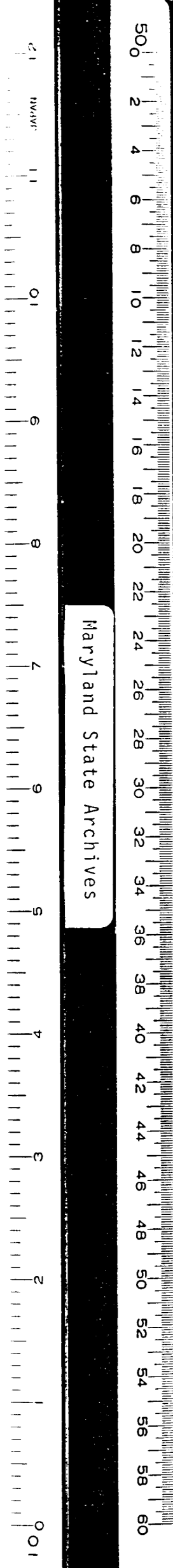
A. A. COUNTY HEALTH DEPARTMENT

Howard P. Beaul, 9/11/84
Health Officer, Public System Date

STATE OF MARYLAND
PUBLIC OFFICIAL
Charles A. Shreeve III, R.L.S. No. 9422 Date 9-7-84



Maryland State Archives



FIRST FLOOR LEVEL

MAGO VISTA ASSOCIATES
 DATE: September 10, 1984
 James L. Potter Jr., Secretary
 CPM Development Corporation, Partner
 Anthony H. DeVeau, Vice President
 Maryland Service Development Corporation, Partner
 Robert E. Furtney, President
 Acorn Developments, Inc., Partner

ANNE ARUNDEL COUNTY
 OFFICE OF PLANNING AND ZONING
 Florence Beck-Kurdless
 Planning & Zoning Officer
 Date: 9/11/84

A. A. COUNTY HEALTH DEPARTMENT
 Howard Beal
 Health Officer Public System
 Date: 9/11/84

Charles A. Sheehey
 CHARLES ALFRED SHEEHY
 PROFESSIONAL ENGINEER
 STATE OF MARYLAND
 No. 10000
 Date: 9-7-84

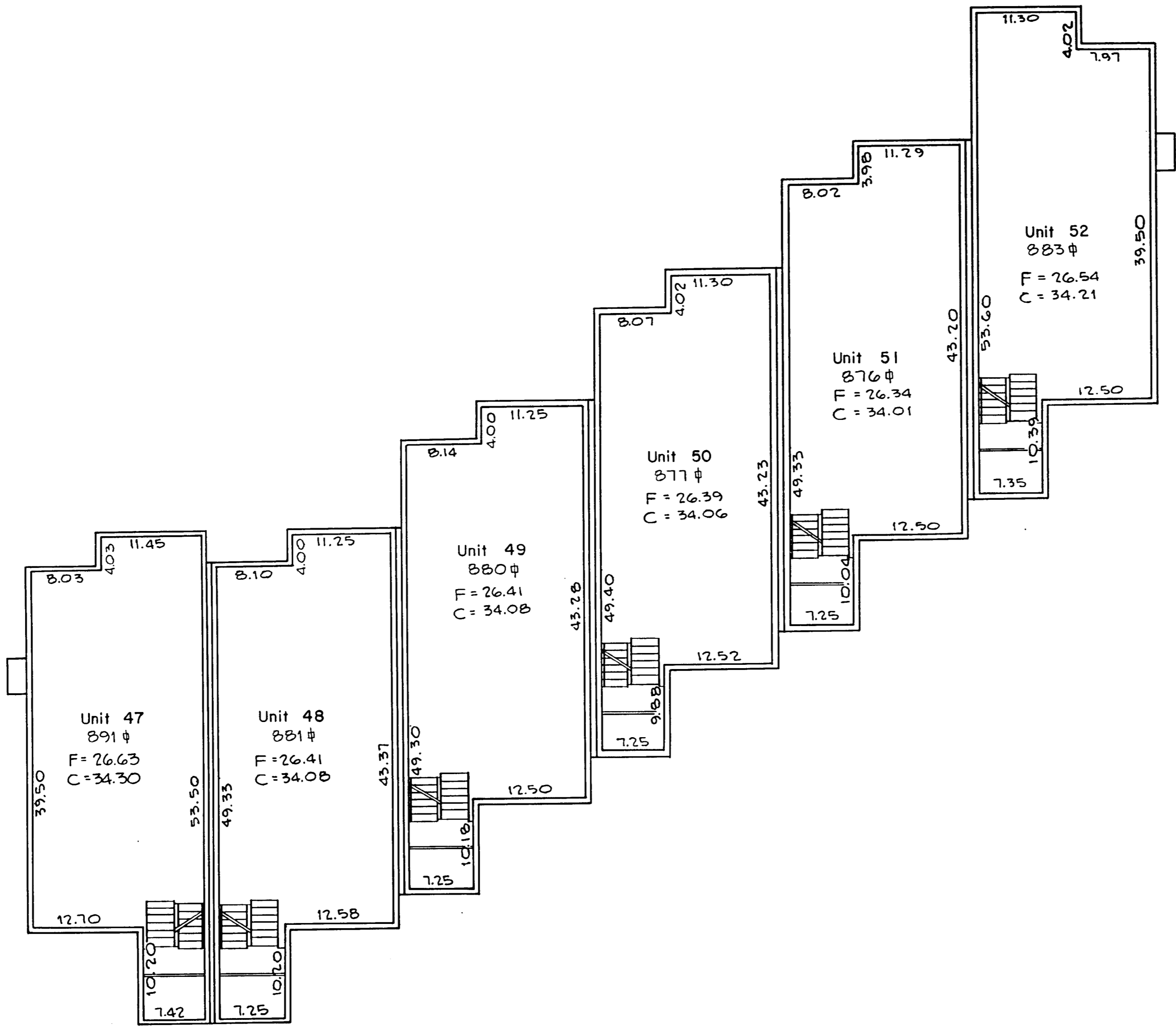
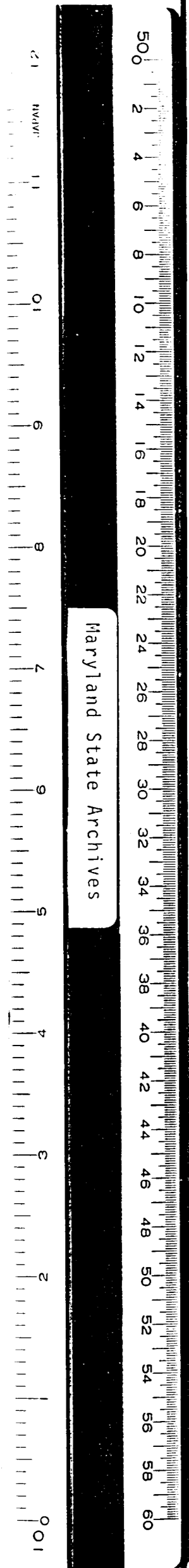
**PHASE ONE
 THE MOORINGS
 ON THE MAGOTHY**

3 RD. DISTRICT
 ANNE ARUNDEL COUNTY, MARYLAND
 SCALE: 1"=10' NOV, 1983

GREENHORNE & O'MARA, INC.
 ENGINEERS ARCHITECTS PLANNERS SURVEYORS
 2098 Generals Highway
 Annapolis, Maryland 21401

SHT. 5 OF 7
 FILE NO. A-165-P

1984 SEP 18 AM 10:28
 E. ARUNDEL COUNTY CLERK



SECOND FLOOR LEVEL

MAGO VISTA ASSOCIATES
 DATE: September 10, 1984
James L. Potter Jr.
 James L. Potter Jr., Secretary
 CPM Development Corporation, Partner
Anthony H. DeVeau
 Anthony H. DeVeau, Vice President
 Maryland Service Development Corporation, Partner
Robert E. Furtney
 Robert E. Furtney, President
 Acorn Developments, Inc., Partner

ANNE ARUNDEL COUNTY
 OFFICE OF PLANNING AND ZONING
Florence Beck Kuddler 9/11/84
 Planning & Zoning Officer Date

A. A. COUNTY HEALTH DEPARTMENT
Howard Beavel 9/11/84
 Health Officer Public System Date

PHASE ONE
 THE MOORINGS
 ON THE MAGOTHY

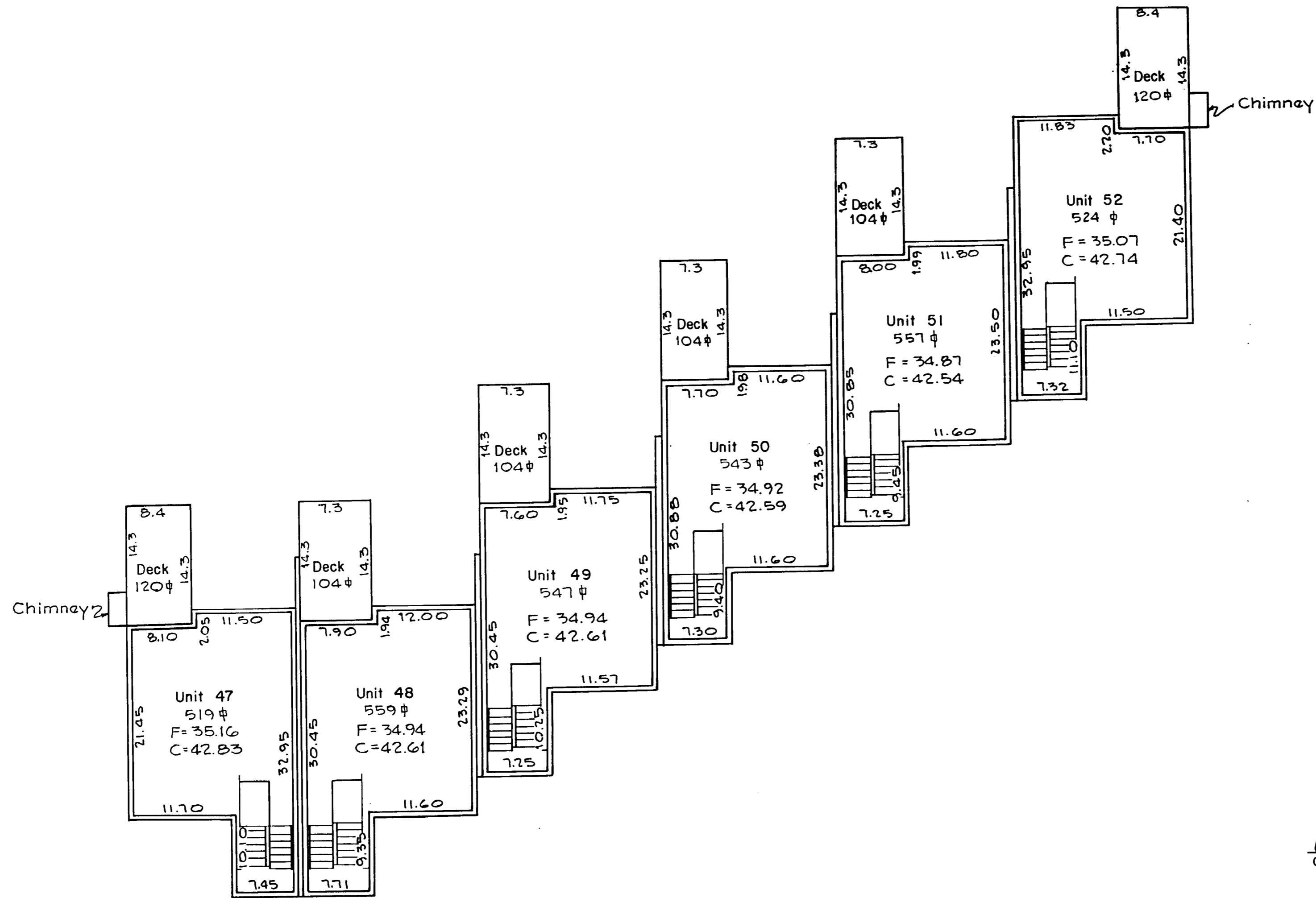
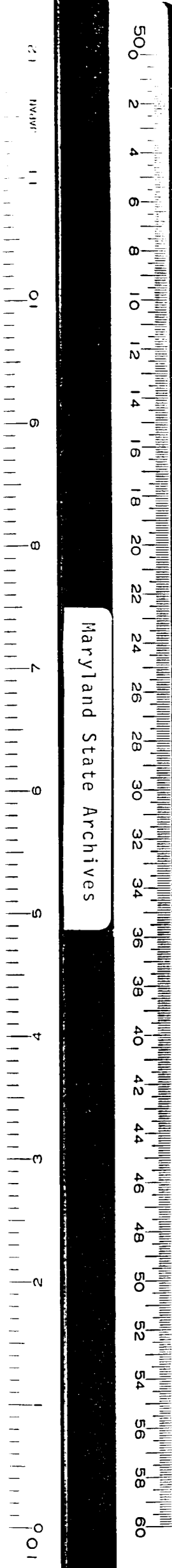
3RD. DISTRICT
 ANNE ARUNDEL COUNTY, MARYLAND
 SCALE: 1"=10' NOV, 1983

GREENHORNE & O'MARA, INC.
 ENGINEERS ARCHITECTS PLANNERS SURVEYORS
 2098 Generals Highway
 Annapolis, Maryland 21401

Charles A. Shreeve 9-7-84
 Charles A. Shreeve, S. No. 3422 Date

SHT. 6 OF 7
 FILE NO. A-165-P

ANNE ARUNDEL COUNTY CIRCUIT COURT (Condominium Plans, AA) Plans E1256-E1262; Plat Book E26, pp. 6-12, MSA_S1489_688. Date available 1994/09/18. Printed 11/01/2018.



THIRD FLOOR LEVEL

MAGO VISTA ASSOCIATES
 DATE: September 10, 1984
 James L. Potter Jr., Secretary
 CPM Development Corporation, Partner
 Anthony H. DeVeau, Vice President
 Maryland Service Development Corporation, Partner
 Robert E. Furtney, President
 Acorn Developments, Inc., Partner

ANNE ARUNDEL COUNTY
 OFFICE OF PLANNING AND ZONING
 Florence Beck Kundle, 9/11/84
 Planning & Zoning Officer Date

A. A. COUNTY HEALTH DEPARTMENT
 Health Officer Public System 9/11/84
 Date

Charles A. Strickland
 STATE OF MARYLAND
 CHARLES ALFRED STRICKLAND
 No. 9422
 Date 9-7-84

PHASE ONE
 THE MOORINGS
 ON THE MAGOTHY

3 RD. DISTRICT
 ANNE ARUNDEL COUNTY, MARYLAND
 SCALE: 1"=10' NOV, 1983

GREENHORNE & O'MARA, INC.

ENGINEERS ARCHITECTS PLANNERS SURVEYORS

2098 Generals Highway
 Annapolis, Maryland 21401

SHT. 7 OF 7
 FILE NO. A-165-P